

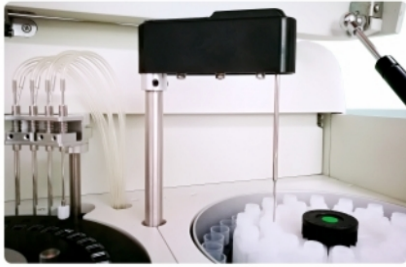
NEO-1200

Chemistry Analyzer

Innovation design Smart combination

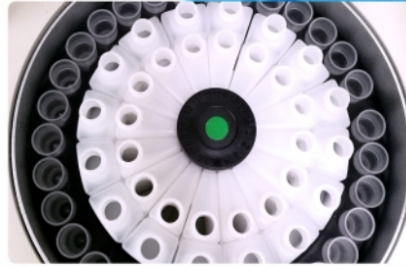


- 120 tests per hour-Time Efficiency
- Automated testing & Low maintenance-Operation Efficiency
- 150uL reagent consumption-Cost Efficiency



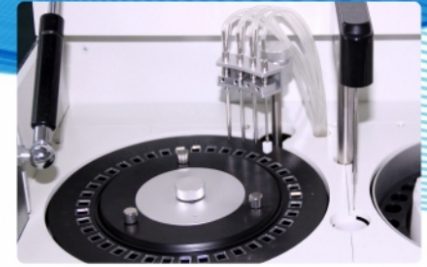
Sampling probe

- External & internal mirror polish, external & internal probe washing
- Dedicated sampling probe equipped with sensitive liquid sensor
- Collision protection



Multi-functional sample & reagent tray

- 32 reagent positions (16 for R1, 16 for R2)
- 31 sample positions, micro cup & primary tube available



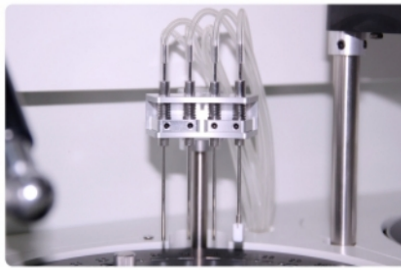
Reaction tray

- 40 reaction cuvettes
- Reaction volume as low as 150uL
- Stable & accurate temperature ($37\pm 0.1^{\circ}\text{C}$) for reaction



High precision ceramic syringe

- Sample dispensing by frequency converting design
- Accurate dispensing as low as 0.1uL



Washing station

- 4 needles wash-station
- Twofold washing
- Effective washing to ensure accurate result and valid diagnostics

Technical specifications

General information

Machine type: Random access, open reagent
Throughput: Constant 120T/H (mono/double reagent)
Test principle: Colorimetric method, turbidimetry
Test method: End point, fixed-time, Kinetics
Calibration type: Linear & nonlinear
LIS: available
Water consumption: 1 L/H

Sample & Reagent unit

Sample tray: 31 sample positions
Sample cup type: Micro cup & primary tube
Reagent tray: 32 reagent positions (16 for R1, 16 for R2)
Sample volume: 2-30uL, step by 0.1uL
Reagent volume: 20-300uL, step by 1uL

Operation system requirements

OS: Win XP, Win 7, win 8
Communication: USB

Optical system

Light source: cold light (LED)
Wavelength (nm): 340, 405, 450, 510, 546, 630 (2 more options)
Absorbance range: 0-4.0A
Resolution: 0.0001A

Working conditions

Power supply: 100-240VAC, 50/60Hz, 102W
Dimension: 468mm*270mm*290mm
Weight: 13kg



LAB Market

لاب ماركت

- مستلزمات معملية
- كيمائيات
- أجهزة
- صيانة

01096411333

بنها - عمارة ٢ غرب الاستاد - بجوار كنتاكي - خلف نقابة الاطباء ومطعم الرشيدى