



# DP-2200Plus

## Digital Ultrasonic Diagnostic Imaging System

### **New operation experience**

- Silicon control panel, easy to operate, less fatigue for long time scanning
- Backlit, suitable for dark room operation
- 8-segment TGC control, assure delicate image adjustment

### **Proven Images**

- Full digital imaging technology
- Reliable image quality for daily diagnosis

### **Wide applications**

- Multiple transducers make different applications accessible
- Professional software packages for abdomen, obstetrics, gynecology and orthopedics

### **Powerful information management**

- Multi-frames cine loop
- USB ports and build-in image archive
- Standard diagnostic reports and easy printing

**mindray**

healthcare within reach

# DP-2200Plus

## Digital Ultrasonic Diagnostic Imaging System



Silicon backlit control panel

### Technical Specifications:

#### General Descriptions

Imaging mode:	B, B+B, B+M, M
Gray scale:	256
Display:	10" non-interlaced
Transducer frequency:	2.5 ~ 10MHz
Transducer connector:	1 (standard), 2 (optional)
Dynamic imaging technology:	Digital Beam-forming (DBF) Dynamic Receiving Focusing (DRF) Up to 16 zone transmitting focusing Dynamic Frequency Scan (DFS) Real-time Dynamic Aperture (RDA) Dynamic Receiving Apodization (DRA)
Scanning angle:	from 67 to 120 degree (depending on transducers)
Scanning depth (mm):	from 21.6 to 248 (depending on transducers)

#### Imaging Processing

Pre-processing:	dynamic range edge enhancement frame correlation 8-segment TGC adjustment IP (Image Process) acoustic power adjustment high resolution/high frame rate select
Post-processing:	gray map left-right reverse up-down reverse

#### Functions:

Cine loop:	128-frame cine loop memory
Storage media:	internal flash and USB
Zoom:	panoramic in real-time and frozen condition
Built-in image archive:	permanent storage up to 90 images

#### Measurement & Calculation

B-mode:	distance, circumference, area, volume, angle, ratio, histogram, profile, S%
M-mode:	distance, time, velocity, heart rate (2 cycles)
Software packages:	abdomen, gynecology, obstetrics, orthopedics, small parts

#### Others

Peripheral port:	video output 1 USB port 1 VGA output port 1 DICOM3.0 1 (optional)
Power supply:	100-240VAC±10%, 50Hz/60Hz
Dimensions:	360mm (W) X 320mm (L) X 270mm (H)
Net weight:	9.5Kg

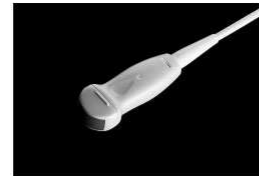
#### Standard Configurations

DP-2200Plus main unit
10" non-interlaced monitor
One transducer connector
128-frame CINE loop
90-frame image storage
One USB port
Measurement & calculation software package
Electronic convex array transducer: 35C50EB (2.5/3.5/5.0MHz)

#### Options

Electronic linear array transducer: 75L38EB (5.0/7.5/10MHz)
Electronic linear array transducer: 75L60EA (5.0/7.5/10MHz)
Electronic endocavity transducer: 65EC10EB (5.0/6.5/8.0MHz)
Electronic micro-convex array transducer: 35C20EA (2.5/3.5/6.0MHz)
Electronic micro-convex array transducer: 65C15EA (5.0/6.5/8.0MHz)
Two transducer connectors
Needle-guided brackets
DICOM3.0
Footswitch

#### Multi-frequency transducers



35C20EA Micro-convex  
Application: Pediatric, Cardiac



35C50EB Convex  
Application: Abdomen, GYN, OB, Urology



75L38EB Linear  
Application: Small Parts



75L60EA Linear  
Application: Orthopedics, Breast, Musculoskeletal



65EC10EB Endocavity  
Application: Endovaginal, Endorectal



65C15EA Micro-convex  
Application: Pediatrics

DISTRIBUTOR:



MINDRAY is a trademark of Shenzhen Mindray Bio-Medical Electronics Co., Ltd. Specifications subject to changes without prior notice.  
© 2010 Shenzhen Mindray Bio-Medical Electronics Co., Ltd. All rights reserved.  
P/N: ENG-DP2200Plus-210285X2-20100721

# mindray

Mindray is listed on the NYSE under the symbol "MR"  
Mindray Building, Keji 12th Road South, High-tech Industrial Park,  
Nanshan, Shenzhen 518057, P.R. China  
Tel: +86 755 26582888 Fax: +86 755 26582680  
E-mail: intl-market@mindray.com Website: www.mindray.com