

**BOUNDLESS VISION
ENDLESS CARE**

Bring Science and Technology to Healthcare



Shenzhen Anke High-tech Co., Ltd.

26 Yanshan Road, Shekou, Shenzhen, Guangdong 518067, P.R.China
Tel: 86-755-26688889 Fax: 86-755-26695307
Website: www.anke.com Contact: anke@anke.com



SuperMark 1.5T

Superconducting MRI System



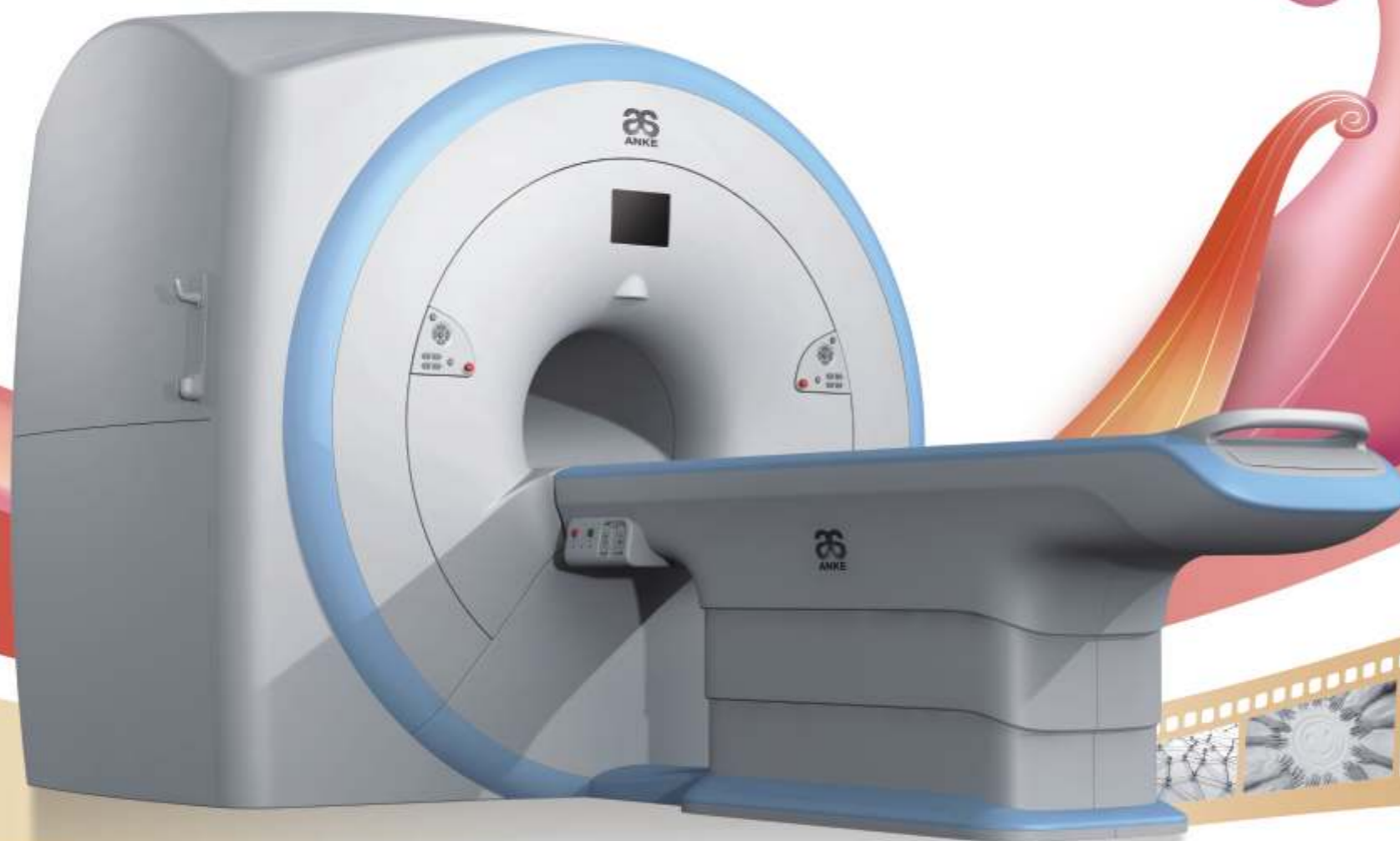
> The 3rd Generation of ANKE Superconducting MRI System

SuperMark 1.5T is a new generation superconducting MRI system based on years of experience in production and research. It's applicable to whole body scan, such as, nervous system, spine, joint soft tissue, pelvic and abdominal cavity, etc.

SuperMark 1.5T provides not only conventional pulse sequences and clinical diagnosis functions, but also provides advanced functional applications, for instance, 3D angiography and water imaging. It adopts brand new ANKE APEX operating system which ensures easy operation and fast diagnosis.

Technical Advantages

- Reliable short cavity superconducting magnet system with zero liquid helium consumption;
- New generation fully digitalized and extensible multi-channel spectrometer;
- Powerful high efficiency and high fidelity gradient system;
- Multi-channel PA RF receiving coil with intelligent identification;
- English operating system and high extensible computer system;
- High resolution conventional clinical images;
- Practical advanced functional imaging.



> High ROI

Low risk, high return.

Low Investment

High cost performance superconducting MRI system;
Zero liquid helium consumption, low running and maintenance cost;
Core technology by independent R & D supports full upgrade;
Low electric consumption;
Compact magnet design, minimum installation space: 35 square meters.

High Return

High resolution thin slice images improve diagnosis;
Short cavity magnet design makes patients comfortable;
Fast scan speed improves work efficiency.

Fast Scan Speed

SuperMark 1.5T is suitable for all patients. Simple operation and the concept of whole body phased array coil reduce examination time and improve work efficiency greatly.

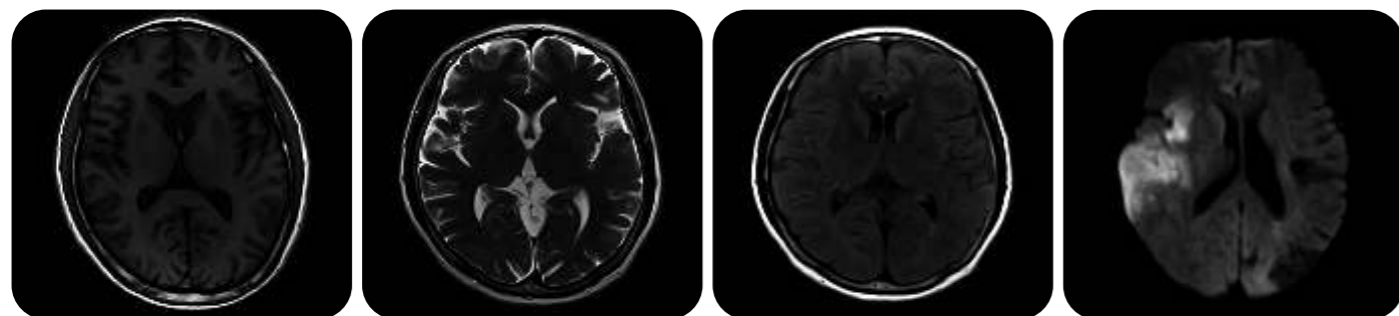
Upgrade Commitment

Comprehensive upgrade patch ensures your system in the technology frontier. With upgrade planning package, you can have the latest software and hardware platform continuously.

Outstanding performance, great value.



> Excellent Image Quality

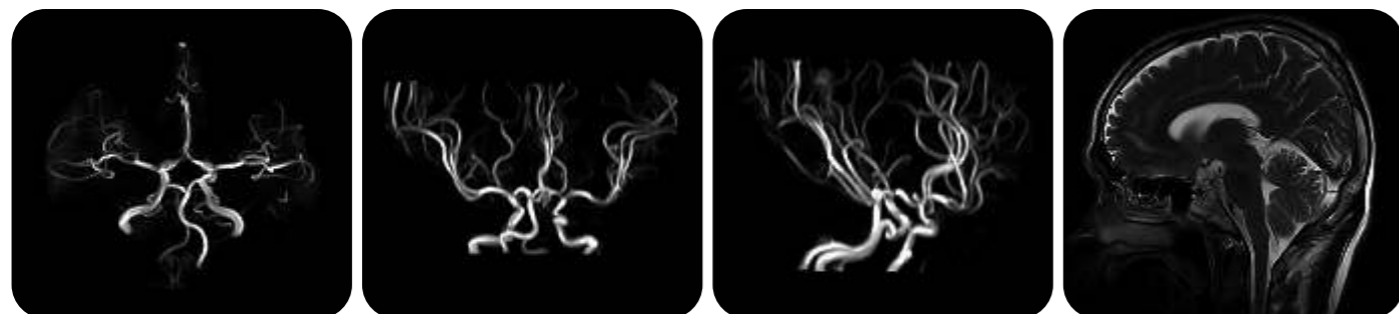


Brain T1

Brain T2

Brain Flair

DWI

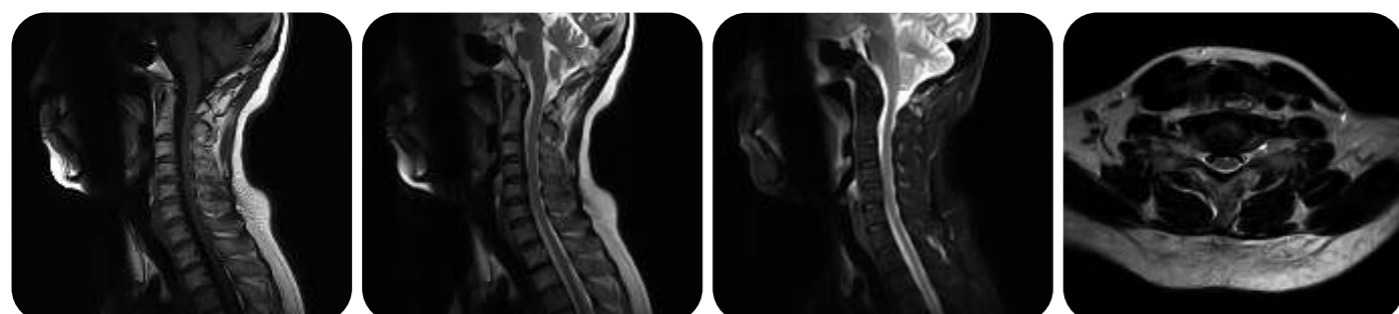


MRA

MRA

MRA

Brain T2



C-spine T1

C-spine T2

C-spine Stir

C-spine T2

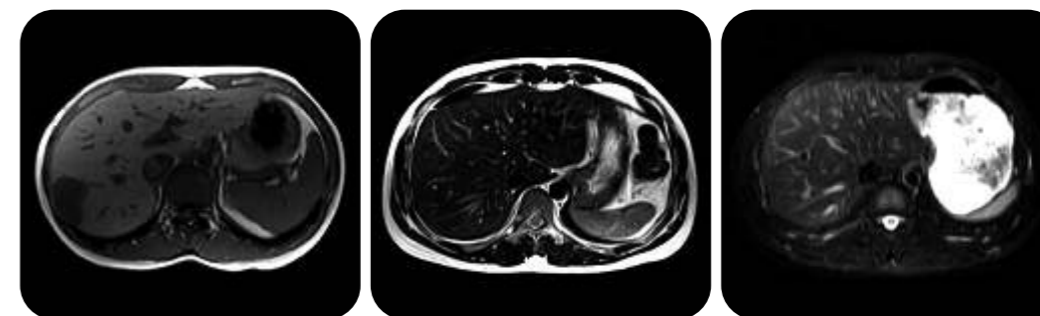


L-spine T1

L-spine T2

L-spine Stir

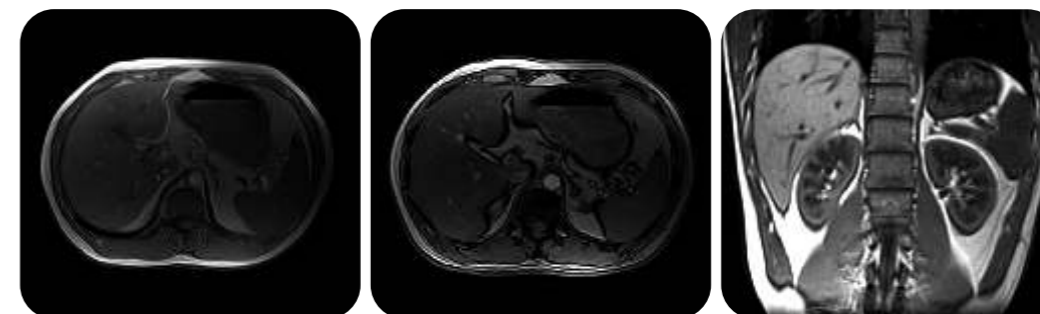
L-spine T2



Abdomen T1

Abdomen T2

Abdomen Stir



Abdomen in Phase

Abdomen out Phase

Abdomen Coronal GR



MRCP

MRCP

MRU



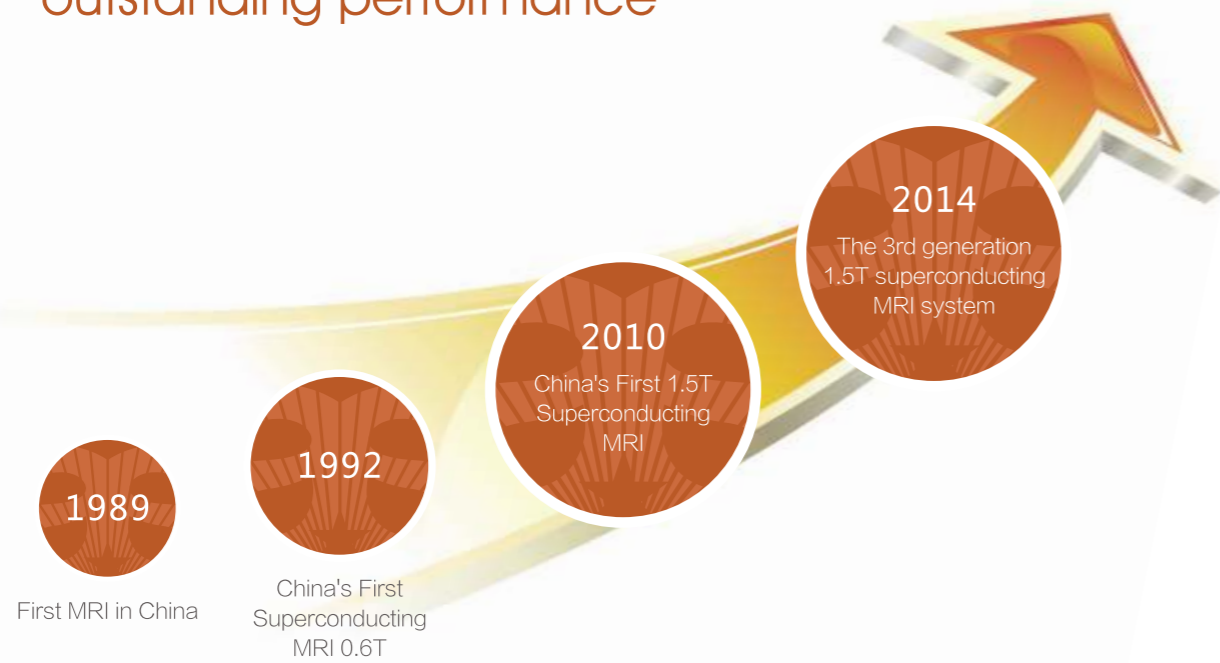
Knee T1

Knee T2

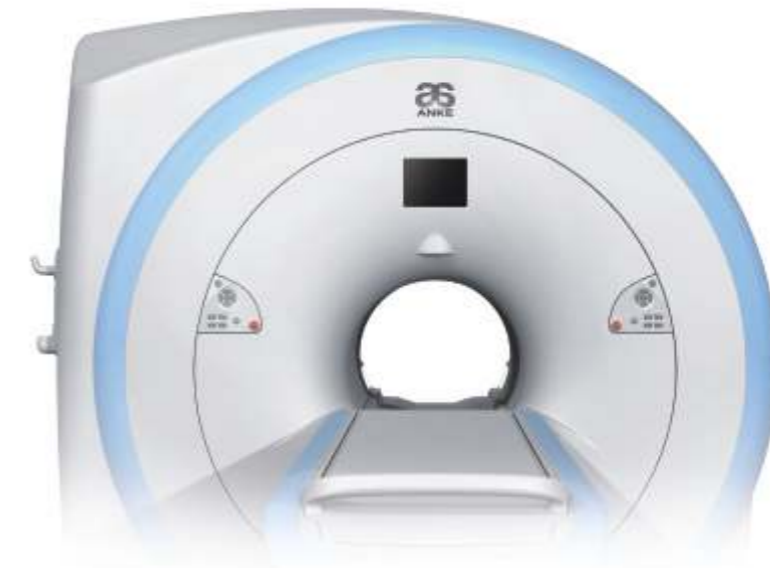
Knee Stir

> Leading Chinese MRI into Superconducting Era

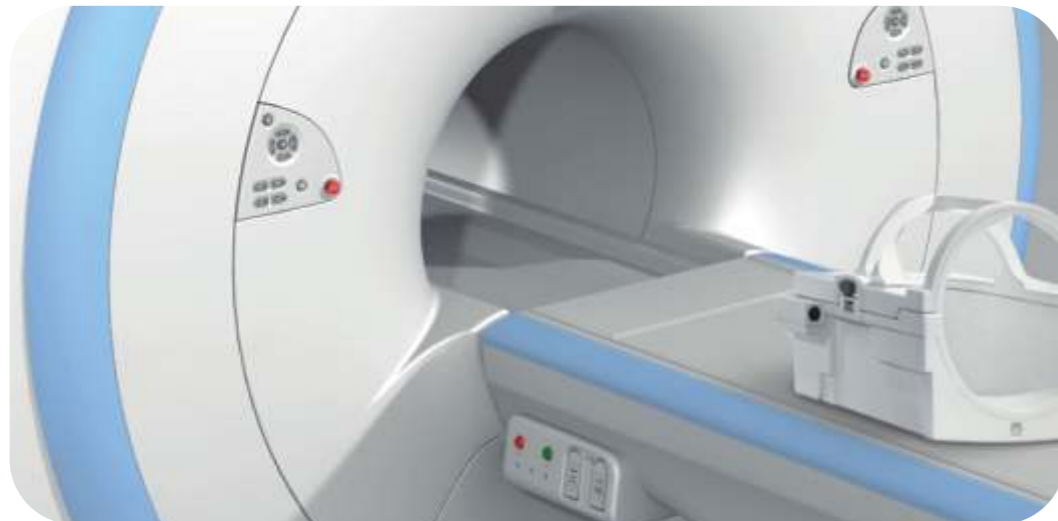
Near 30 years experience and technology accumulation in MRI ensure outstanding performance



> Superconducting MRI System



- > Highly open and humanization design
- > Streamlined design
- > Rich sequences and technology satisfy clinical needs
- > Efficient service



> Flexible Site Design



> Installation Requirements

Power Supply

Phase Voltage	380V
Voltage Stability Range	± 10%
Frequency Range	50/60Hz, ± 1Hz
Connection Power Value ¹	60kVA

Average power value of normal operation with full load

Space Requirement

Minimum Space	35m ²
---------------	------------------

> All-around Service Support

Service response within 24 hours;
 Rich spare parts backup and fast delivery;
 Efficient service network, over 100 service engineers.

