

Comprehensive selection of transducers

Curved array transducers



CA2-8AD

- Application : abdomen, obstetrics, gynecology



CF4-9

- Application : pediatric, vascular

Linear array transducer



LN5-12

- Application : small parts, vascular, musculoskeletal

Volume transducers



VN4-8

- Application : abdomen, obstetrics, gynecology



V5-9

- Application : obstetrics, gynecology, urology

Endocavity transducer



EVN4-9

- Application : obstetrics, gynecology, urology

Phased array transducer



PN2-4

- Application : abdomen, cardiac, vascular

CW transducer



DP2B

- Application : cardiac

Samsung Medison, an affiliate of Samsung Electronics, is a global medical company founded in 1985. With a mission to bring health and well-being to people's lives, the company manufactures diagnostic ultrasound systems around the world across various medical fields. Samsung Medison has commercialized the Live 3D technology in 2001 and since being part of Samsung Electronics in 2011, it is integrating IT, image processing, semiconductor and communication technologies into ultrasound devices for efficient and confident diagnosis.

CT-HS40 V1.0-OB-FT-170411-EN

* This product, features, options, and transducers are not commercially available in all countries. Due to regulatory reasons, their future availability cannot be guaranteed. Please contact your local sales representative for further details.

SAMSUNG MEDISON CO., LTD.

© 2017 Samsung Medison All Rights Reserved.
Samsung Medison reserves the right to modify the design, packaging, specifications, and features shown herein, without prior notice or obligation.

Establish everyday efficiency

Ultrasound system
HS40





LAB Market

لاب ماركت

- مستلزمات معملية
- كيمويات
- أجهزة
- صيانة

01096411333

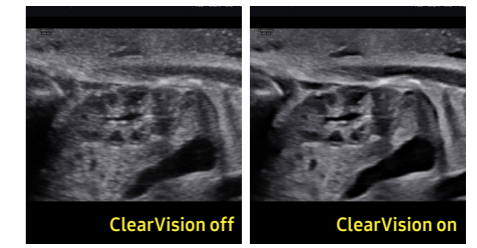


Extraordinary image quality for a clearer view

With the astonishingly clear view provided by Samsung's advanced imaging technologies, you can make clinical decisions with greater confidence.

ClearVision

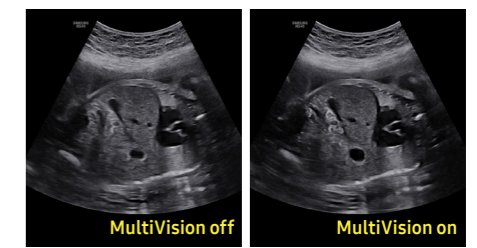
The noise reduction filter improves edge enhancement and creates sharper 2D images for optimal diagnostic performance. The integration of specialized Samsung technology results in a notable improvement in image quality. In addition, ClearVision provides application-specific optimization and advanced temporal resolution in live scan mode.



Fetal kidney

MultiVision

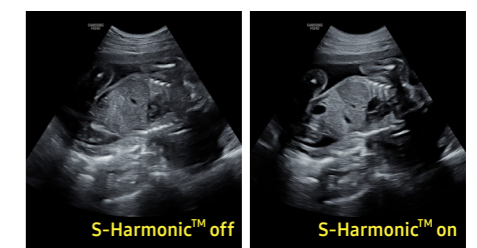
MultiVision controls ultrasound beam electronically by steering, and compounds many scan lines for better image. MultiVision provides remarkable spatial and contrast resolution with even greater artifact suppression than ever before.



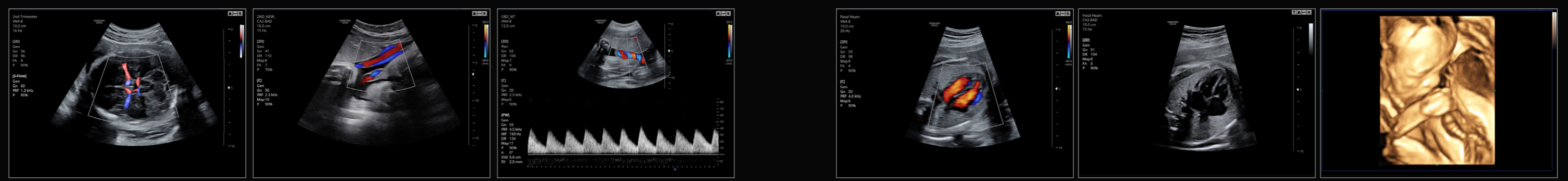
Fetal abdomen

S-Harmonic™

This new harmonic technology provides greater image uniformity from near to far field while reducing signal noise. Combined with ClearVision and MultiVision, S-Harmonic™ improves the image quality of HS40.



Fetal abdomen



Fetal brain in S-Flow™ Umbilical cord in color Doppler Umbilical cord in PW Fetal heart in color Doppler Fetal heart 2nd trimester

Enhanced tools for optimized care

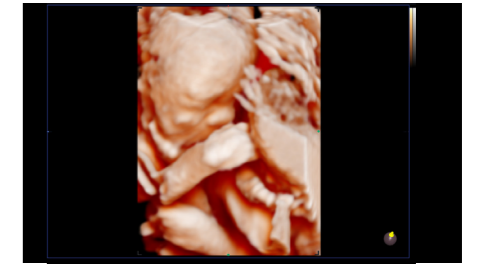
Samsung's advanced yet budget-friendly tools, previously exclusive to our premium ultrasound platforms, enhance obstetric and gynecological exam capabilities for efficient and effective care.



Realistic Vue™

※ Optional Extra

Realistic Vue™ displays high resolution 3D anatomy with exceptional detail and realistic depth perception. User selectable light source direction creates intricately graduated shadows for better defined anatomical structures.

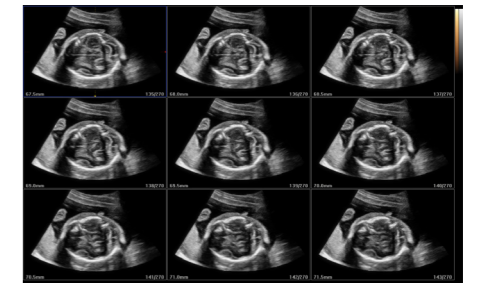


Fetal face

3D XI

※ Optional Extra

Comprised of a suite of outstanding imaging applications (Multi-Slice View, Oblique View, and Volume CT), 3D XI offers precise control over 3D/4D volume data manipulation to improve diagnostic accuracy.



Fetal brain in MSV

5D NT™

(Nuchal translucency measurement)

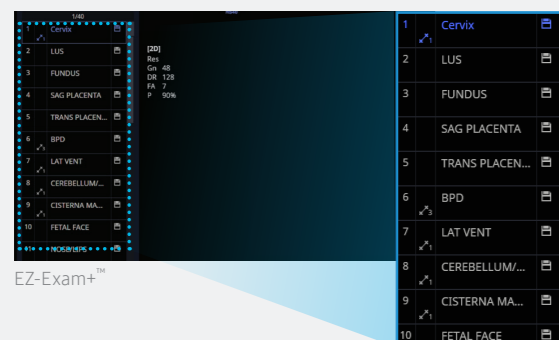
※ Optional Extra

With Samsung's 5D NT™, operator dependency can be reduced for the first trimester fetal nuchal translucency (NT) measurement. 5D NT™ allows the user to obtain the true mid-sagittal plane automatically by rotating and auto-zooming the image. This advanced technology is especially useful when facing difficult cases involving fetal position.

EZ-Exam+™

※ Optional Extra

EZ-Exam+™ enables users to build or to use predefined protocols. It transforms the ultrasound investigation into a streamlined process.



EZ-Exam+™

Quick Preset

With one touch, the user can select the most common transducer and preset combinations. Quick Preset maximizes efficiency to make a full day of scanning simple and easy.



CA2-8AD

Hello Mom™

Hello Mom™ supports simple and secure transfer of fetal ultrasound images and clips wirelessly from the HS40 ultrasound system directly to an Android smartphone or iPhone application. These images can then be shared easily with others.

Download the Hello Mom™ app on your smartphone.



- ※ Hello Mom™ is not an application for diagnosis.
- ※ Mobile export (optional) is required for Hello Mom™.
- ※ Google Play and the Google Play logo are trademarks of Google Inc.
- ※ The Apple logo is a trademark of Apple Computer, Inc, registered in the U.S. and other countries.



User-friendly design

HS40's ground-breaking design was inspired by users' ideas and suggestions during development. Every detail, such as the fully articulating monitor arm, the operating panel which can be easily adjusted to different heights, and additional storage space, has been created to make the work environment more comfortable. And it is this focus on the user that has led to the product winning a prestigious 2017 iF Design Award.



1. Articulating monitor arm

With a wide range of motion, the fully articulating monitor arm adapts to your changing needs.



2. Height-adjustable operating panel

Adjust the operating panel to your preferred height without straining, thanks to the smooth upward and downward motion of the gas lift.



3. Endocavity transducer holder

HS40 features an endocavity transducer holder, side-mounted on the console for convenience when performing gynecological scanning. **※ Optional Extra**



4. Gel warmer **※ Optional Extra**

Two-level adjustable gel warmer maintains ultrasound gel at a comfortable temperature.



5. Side storage **※ Optional Extra**

The side storage is ideal for storing a tablet, patient charts, or other items that you need to keep close at hand.



6. Rear tray **※ Optional Extra**

HS40's rear tray provides extra storage space for the endocavity transducer and other items.



7. Low noise

This exceptionally quiet device allows physical exams to be performed, including auscultation, while the ultrasound system is turned on.



8. Printer cover **※ Optional Extra**

The user-friendly cover tidies and hides away printer cables that may otherwise become tangled.

